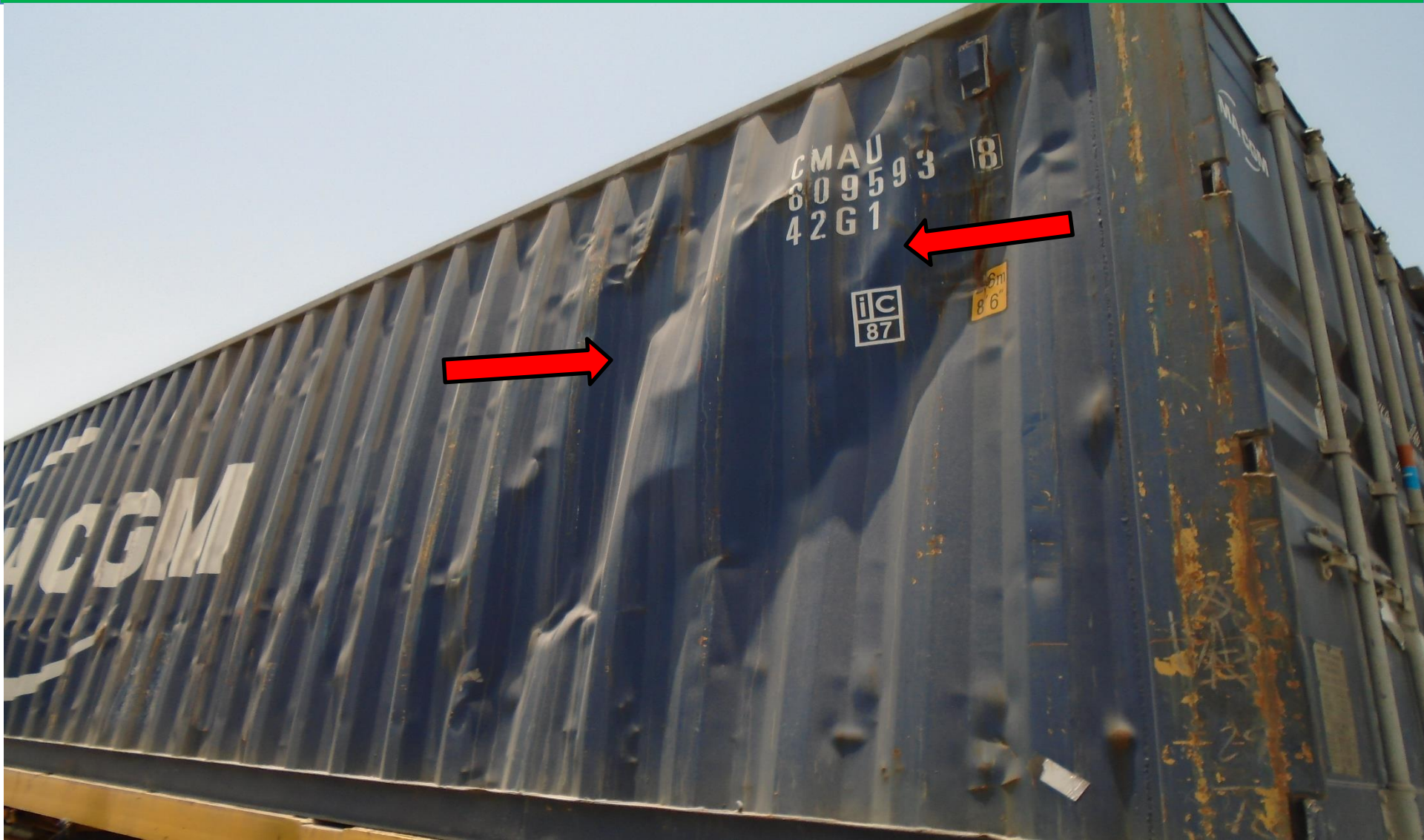


# Dents/Bulge In/Out



# Dent with Cut







# Dented/Push In/Out (Major Damage)





# Bent Locking Long Bar (Major Damage)





Cut side panel below



# Cut and Dents





# Dent Front Bottom Rail (In Between 2x20')

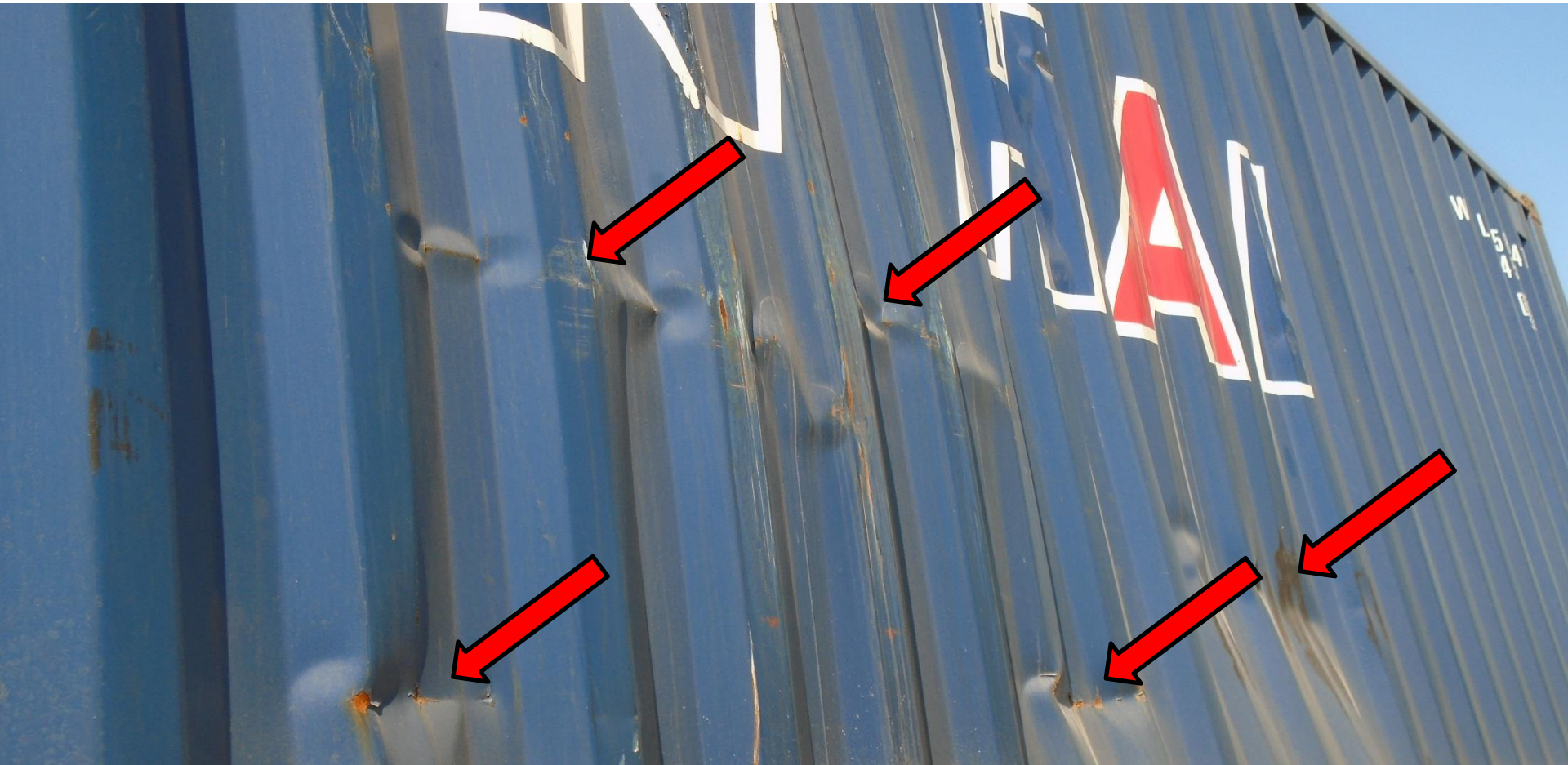




# Cut/Hole Top Panel (Major Damage)



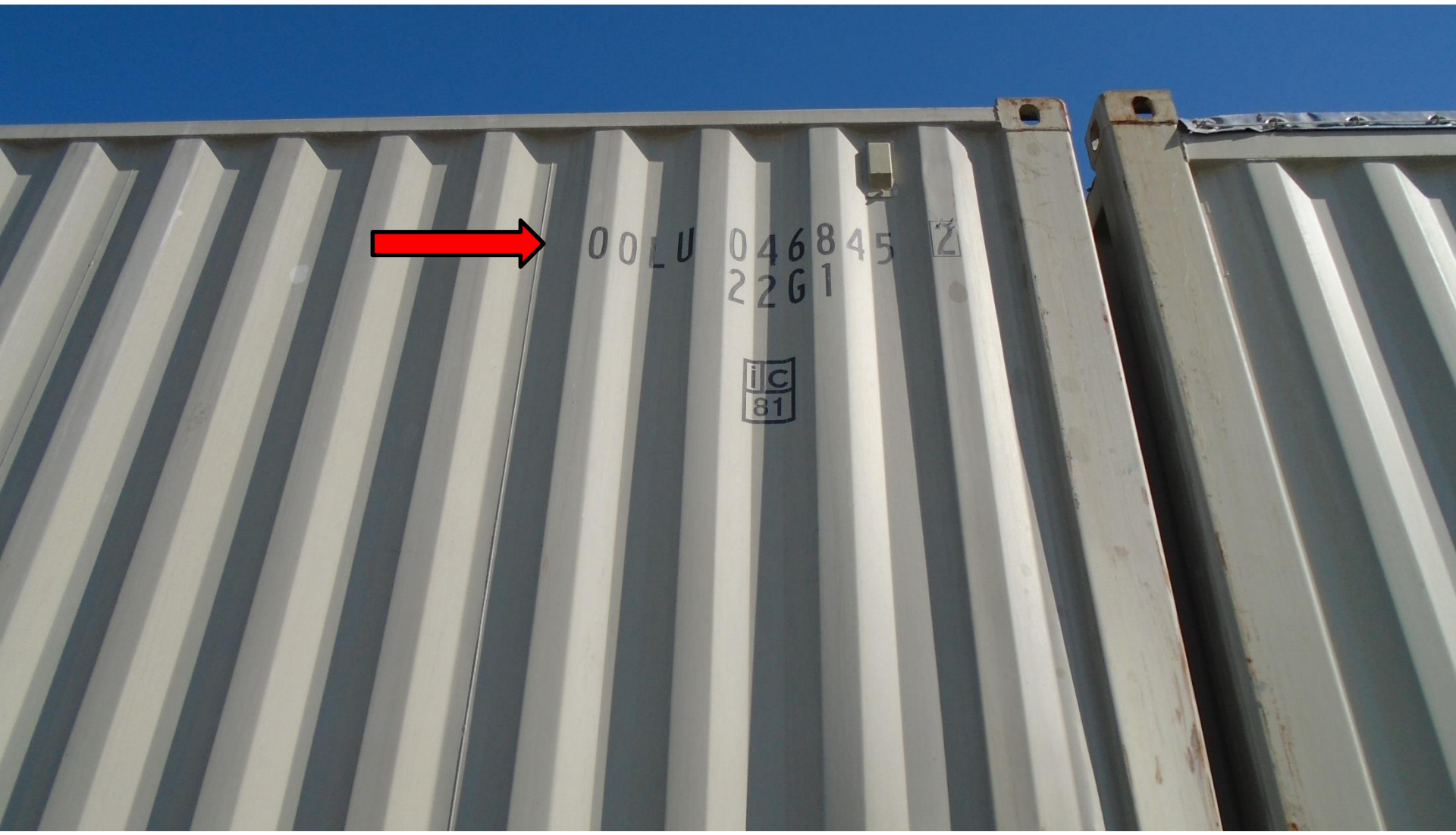
# Dents and Push In/Out



SAUDI GLOBAL PORTS



Taken photo of the Container # with  
damage



# Bent Corner Post/Casting (Major Damage)





# Bent Corner Post/Casting (Major Damage)



# Bent Corner Post/Casting (Major Damage)





# Big Cut @ the top panel (Major Damage)

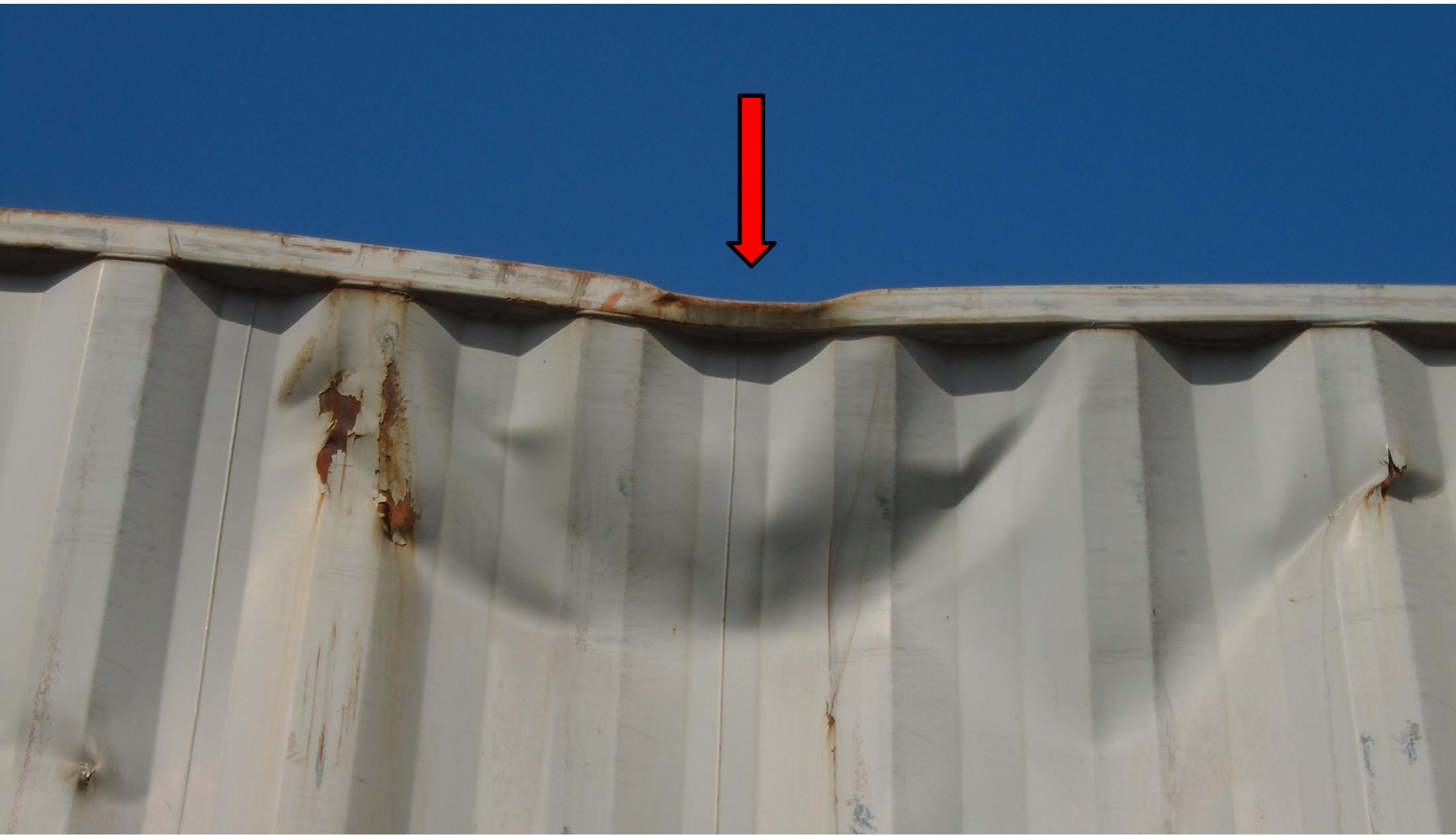


# Big Cut @ the top panel (Major Damage)





Push In/Dents @ top side panel



# Bent Cam Keeper (Major Damage)





# Door Gasket (rubber gasket) (Major Damage)



Big cut @ below side panel  
(Major Damage)





## Other type of damages

@Top Panel Push In/Out

@Top Panel Bulge In/Out

@Top Panel Cut/Hole

@Top Panel Push In/Out

@Cross Member Damage

## CONTAINER DAMAGE CODES

CODE	DESCRIPTION
<b>FRONT SIDE OF CONTAINER</b>	
00	FRONT SIDE – TOP RAIL DAMAGE
01	FRONT SIDE – BOTTOM RAIL DAMAGE
02	FRONT SIDE – HOLE/TEAR/CUT
03	FRONT SIDE – OUT OF STANDARD/DAMAGED
04	FRONT SIDE – PUSH IN/OUT
05	FRONT SIDE – DENTED/SCRATCHED
<b>REAR SIDE OF CONTAINER (DOOR)</b>	
10	REAR SIDE – TOP RAIL DAMAGE
11	REAR SIDE – BOTTOM RAIL DAMAGE
12	REAR SIDE – HOLE/TEAR/CUT
13	REAR SIDE – OUT OF STANDARD/DAMAGED
14	REAR SIDE – PUSH IN/OUT
15	REAR SIDE – DOORS NOT COMPLETELY LOCKED
16	REAR SIDE – LOCKING/HANDLE BAR BENT/BROKEN
17	REAR SIDE – HINGES DAMAGED
18	REAR SIDE – DENTED/SCRATCHED
19	REAR SIDE – GASKET DAMAGED/MISSING
<b>LEFT SIDE OF CONTAINER</b>	
20	LEFT SIDE – TOP RAIL DAMAGE
21	LEFT SIDE – BOTTOM RAIL DAMAGE
22	LEFT SIDE – HOLE/TEAR/CUT
23	LEFT SIDE – OUT OF STANDARD/DAMAGED
24	LEFT SIDE – CORNER POST DAMAGE
25	LEFT SIDE – CORNER FITTINGS DAMAGE
26	LEFT SIDE – PUSH IN/OUT
27	LEFT SIDE – DENTED/SCRATCHED
<b>RIGHT SIDE OF CONTAINER</b>	
30	RIGHT SIDE – TOP RAIL DAMAGE
31	RIGHT SIDE – BOTTOM RAIL DAMAGE
32	RIGHT SIDE – HOLE/TEAR/CUT
33	RIGHT SIDE – OUT OF STANDARD/DAMAGED
34	RIGHT SIDE – CORNER POST DAMAGE
35	RIGHT SIDE – CORNER FITTINGS DAMAGE
36	RIGHT SIDE – PUSH IN/OUT
37	RIGHT SIDE – DENTED/SCRATCHED
<b>TOP SIDE OF CONTAINER (ROOF)</b>	
50	ROOF – TARP/ALIN DAMAGED



51	ROOF – TARPAULIN MISSING
52	ROOF – TARPAULIN NOT ATTACHED
53	ROOF – TIEROPE DAMAGED
54	ROOF – TIEROPE MISSING
55	ROOF – HOLE/TEAR/CUT
56	ROOF – OUT OF STANDARD/DAMAGED
57	ROOF – PUSH IN/OUT
58	ROOF – DENTED/SCRATCHED
CONTAINER INTERIOR	
60	INTERIOR – DIRTY/STINKING
61	INTERIOR – WET FLOOR
62	INTERIOR – ROOF BOWS/SUPPORT DAMAGED/MISSING
63	INTERIOR – SIDE PANELS DAMAGED/MISSING
64	INTERIOR – FLOOR DAMAGED
TANK DESCRIPTIONS	
70	TANK – TANK SHELL DAMAGED
71	TANK – FRAME DAMAGED
72	TANK – TANK VALVES/PIPES DAMAGED
73	TANK – TANK PANELS DAMAGED
REEFER DESCRIPTIONS	
80	REEFER – CABLE MISSING
81	REEFER – CABLE DAMAGED
82	REEFER – AIR VENT OPEN
83	REEFER – AIR VENT DAMAGED
84	REEFER – REEFER PLUG MISSING
85	REEFER – REEFER PLUG DAMAGED
86	REEFER – GENERATOR SYSTEM/PANEL DAMAGED
GENERAL DESCRIPTION	
90	GENERAL – LABELS MISSING
91	GENERAL – OLD LABELS NOT REMOVED
92	GENERAL – NOT SEALED UPON ARRIVAL TO TERMINAL
93	GENERAL – CONTAINER LEAKING
94	GENERAL – DENTED ON SEVERAL PLACES
95	GENERAL – CONTAINER BURNED
96	GENERAL – OUT OF SERVICE
97	GENERAL – VENTILATORS DAMAGED
98	GENERAL – CROSS MEMBER DAMAGED
99	CONTAINER IN GOOD CONDITION